

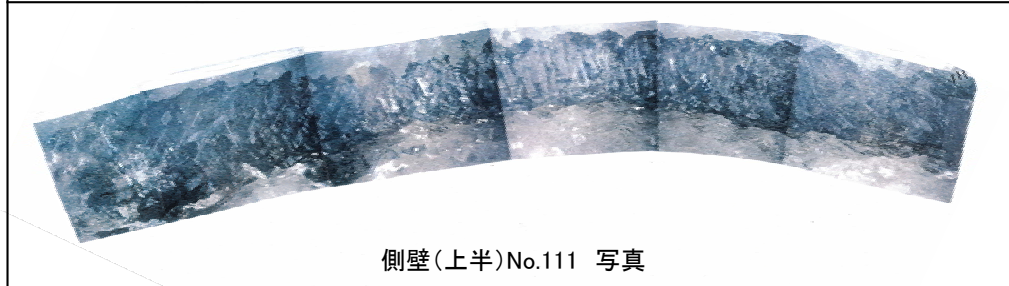
# 2号機取水路水平坑 側壁写真(基数No.110~113)



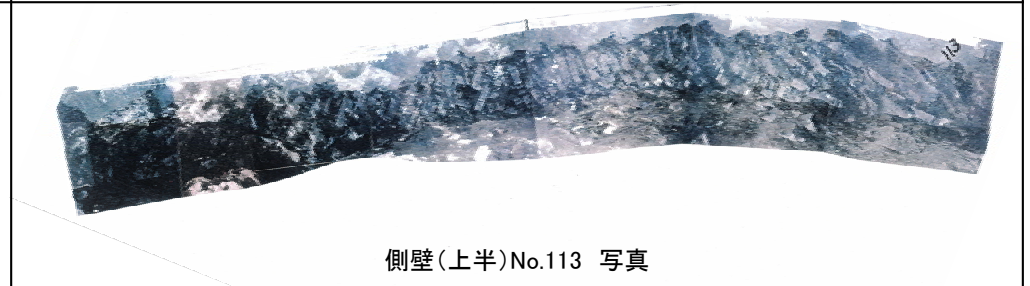
側壁(上半)No.110 写真



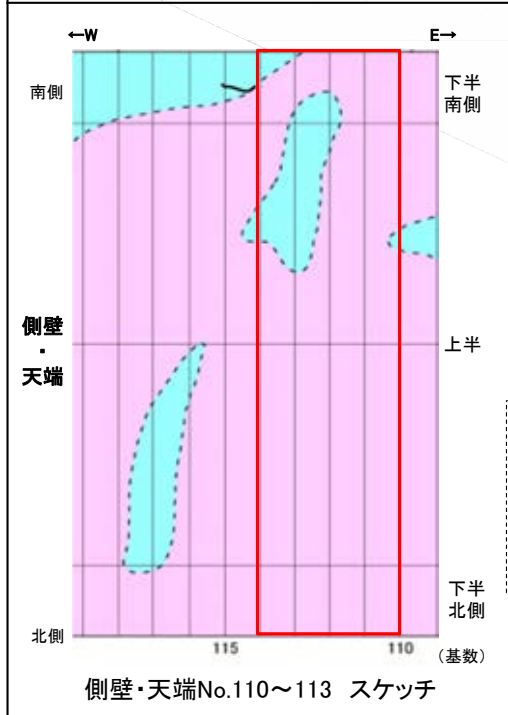
側壁(上半)No.112 写真



側壁(上半)No.111 写真



側壁(上半)No.113 写真



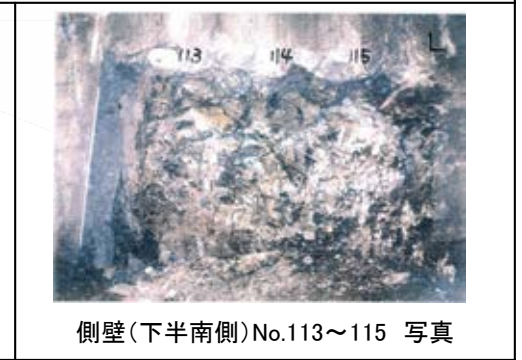
側壁・天端No.110~113 スケッチ



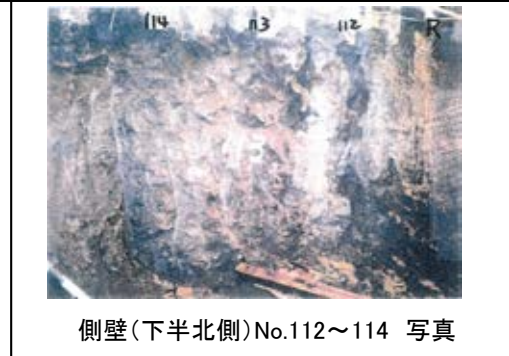
側壁(下半南側)No.109~110 写真



側壁(下半南側)No.111~112 写真



側壁(下半南側)No.113~115 写真



側壁(下半北側)No.112~114 写真



側壁(下半北側)No.108~110 写真

側壁(下半北側)No.111 写真なし

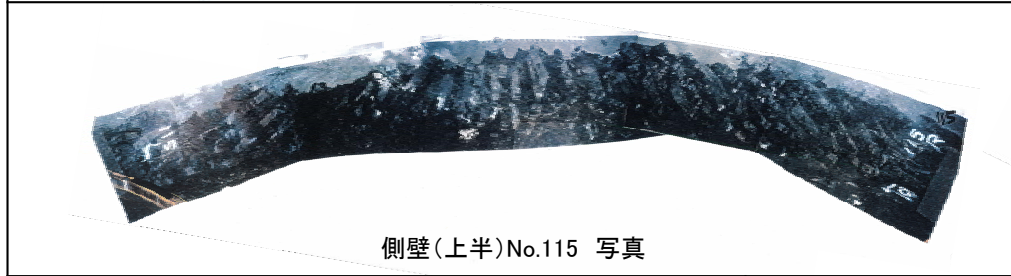
# 2号機取水路水平坑 側壁写真(基数No.114~117)



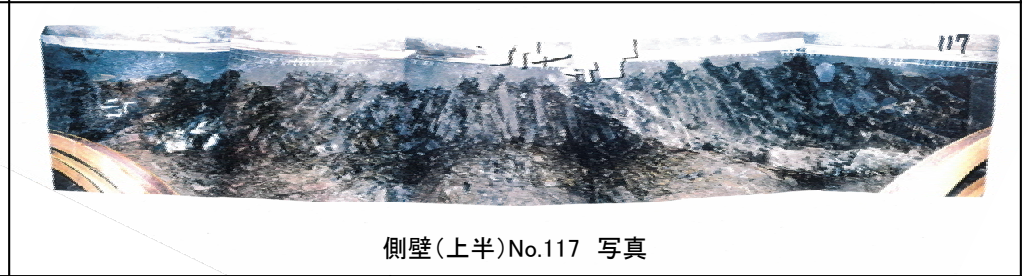
側壁(上半)No.114 写真



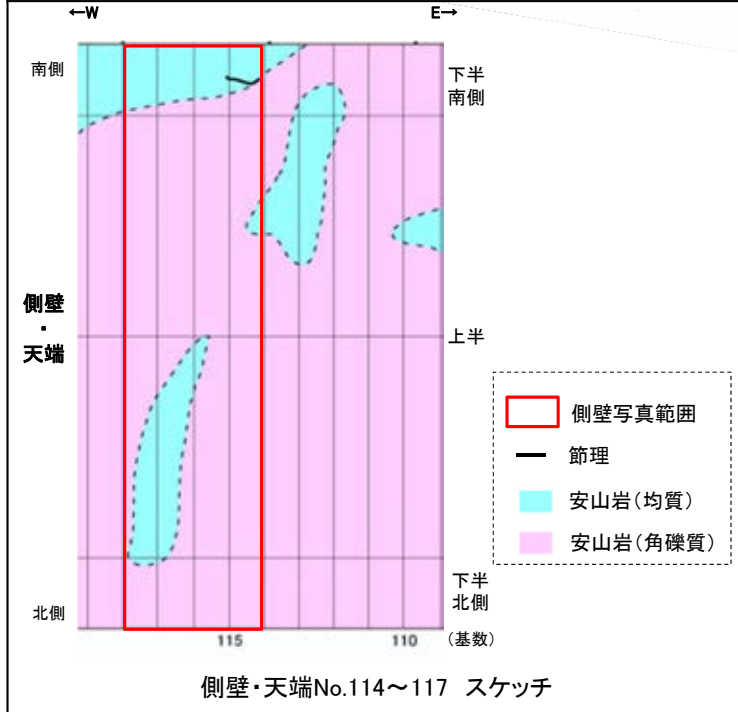
側壁(上半)No.116 写真



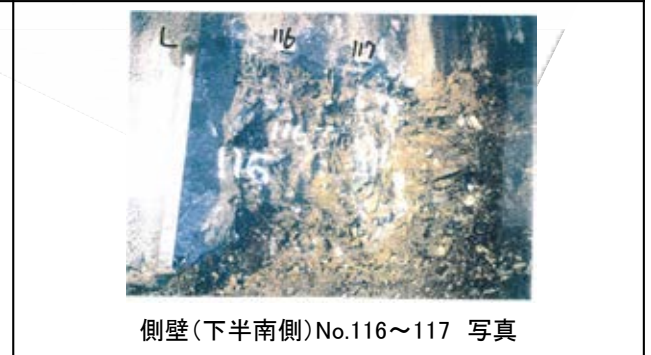
側壁(上半)No.115 写真



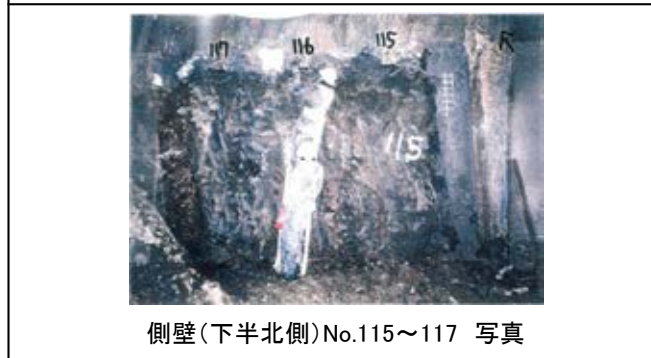
側壁(上半)No.117 写真



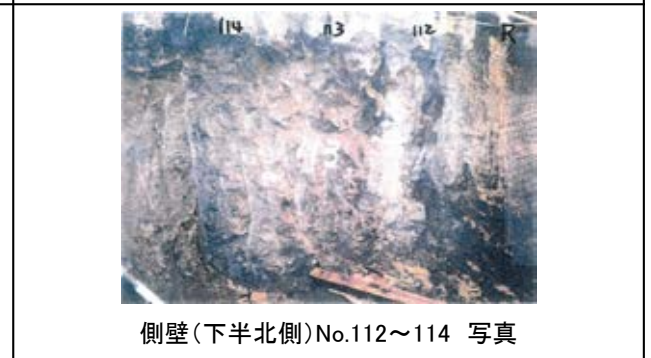
側壁(下半南側)No.113~115 写真



側壁(下半南側)No.116~117 写真



側壁(下半北側)No.115~117 写真



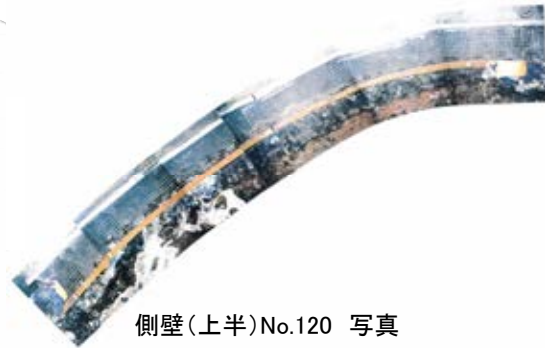
側壁(下半北側)No.112~114 写真



# 2号機取水路水平坑 側壁写真(基数No.118~121)



側壁(上半)No.118 写真



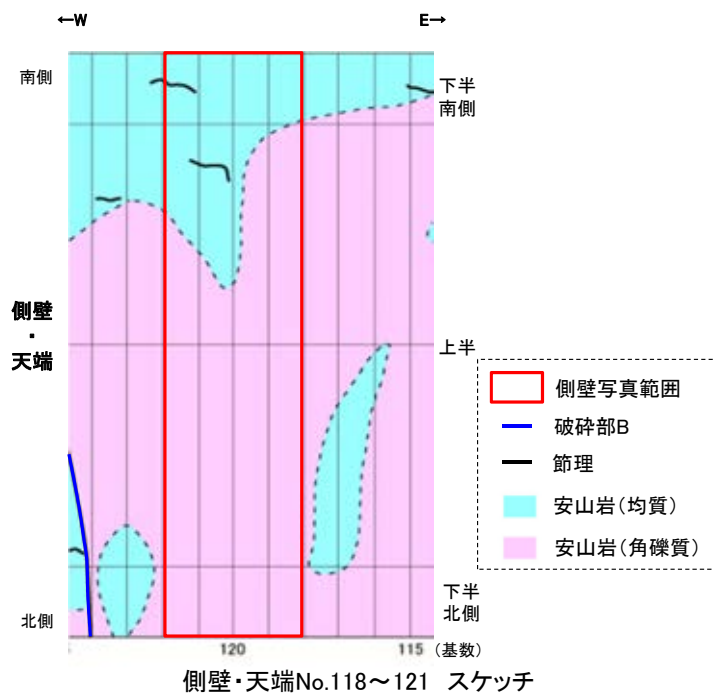
側壁(上半)No.120 写真



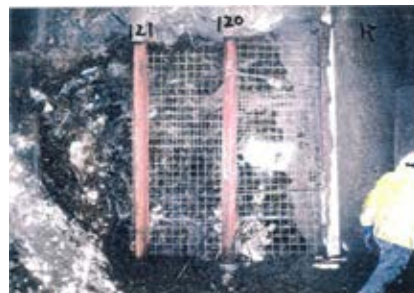
側壁(上半)No.119 写真



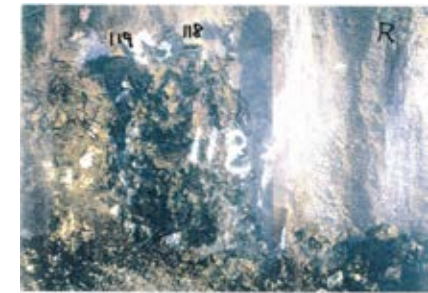
側壁(上半)No.121 写真



側壁(下半南側)No.118~121 写真なし



側壁(下半北側)No.120~121 写真



側壁(下半北側)No.118~119 写真