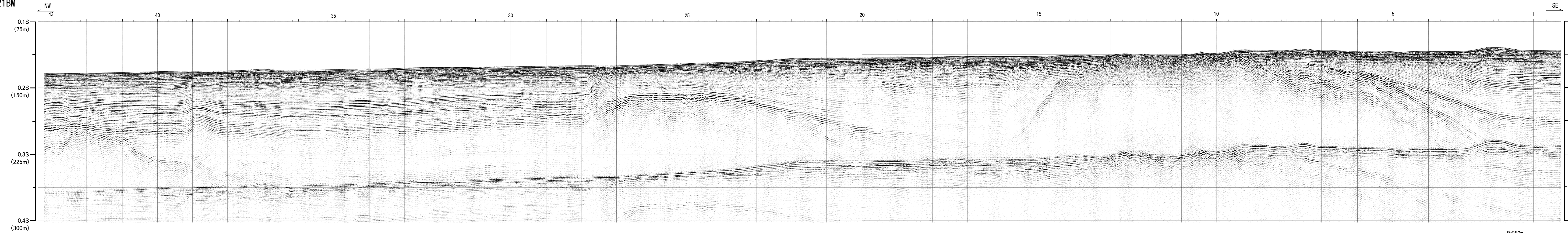
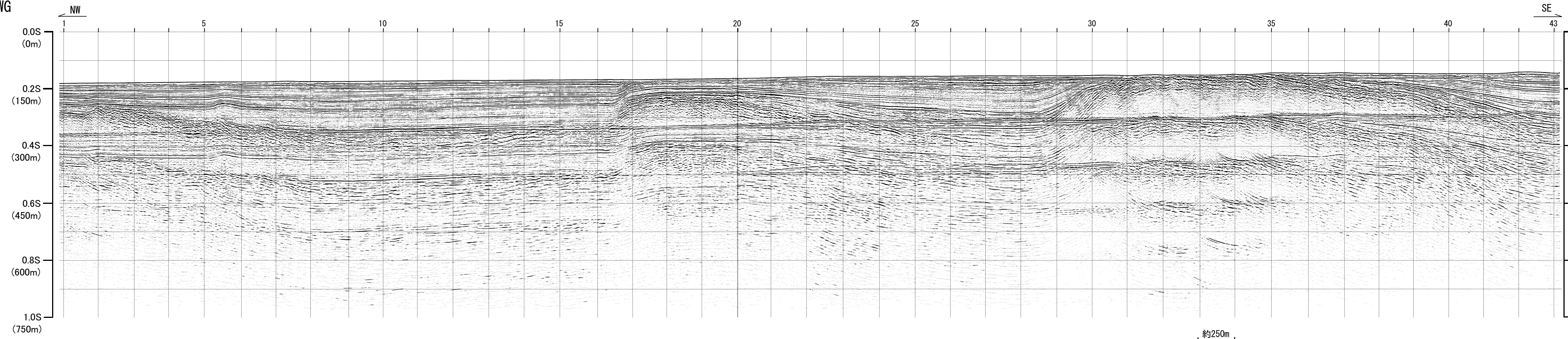


No. 21BM



No. 21BM

No. 21WG



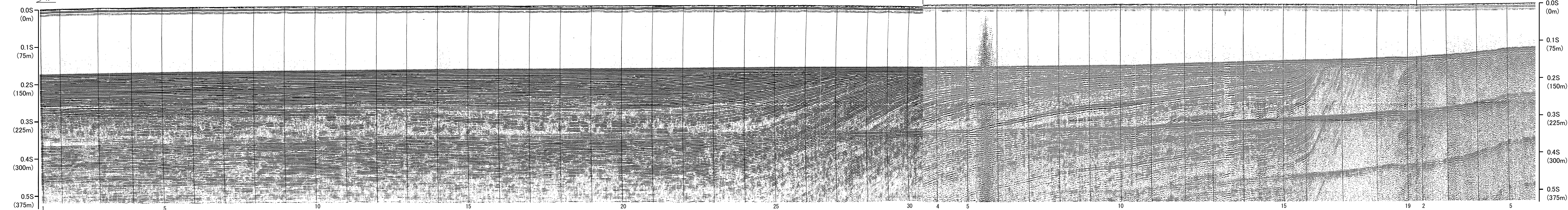
No. 21WG

第3.2-32図(12) 敷地前面海域の音波探査記録 (No. 21BM, No. 21WG)

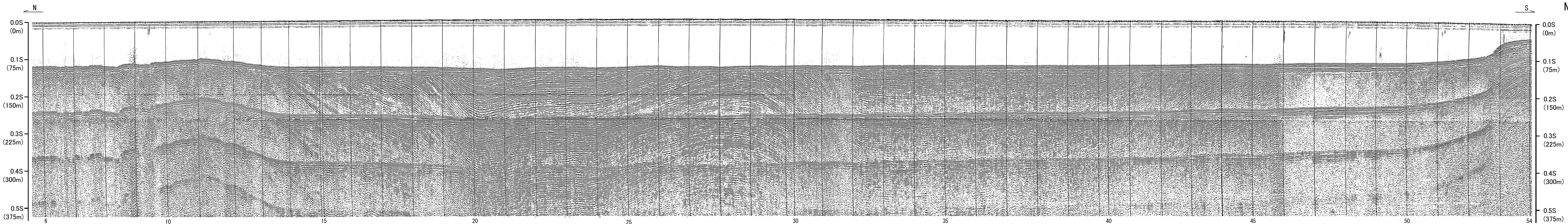
No. 24

No. 24-1 No. 24-2

No. 24-2 No. 24-3



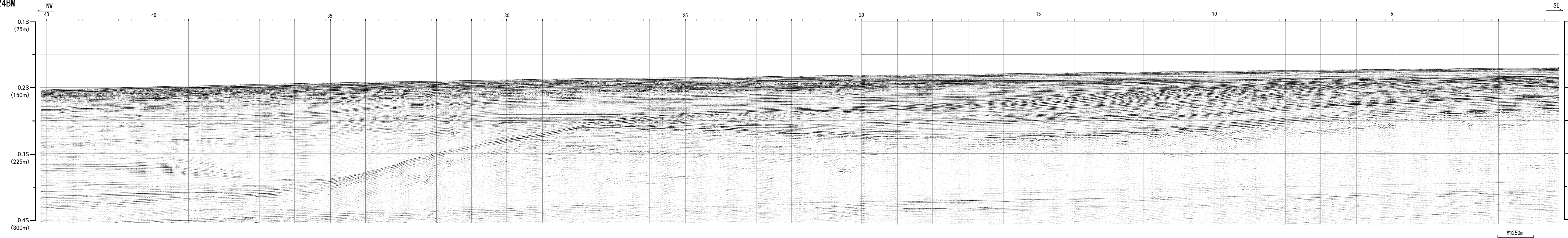
約500m 下段(左端)に続く



約500m

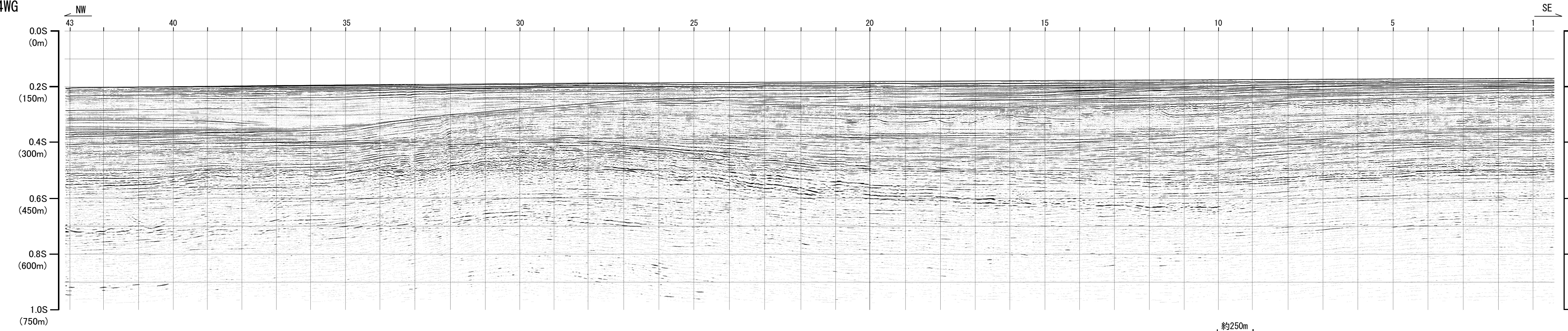
第3.2-32図(13) 敷地前面海域の音波探査記録 (No. 24)

No. 24BM



No. 24BM

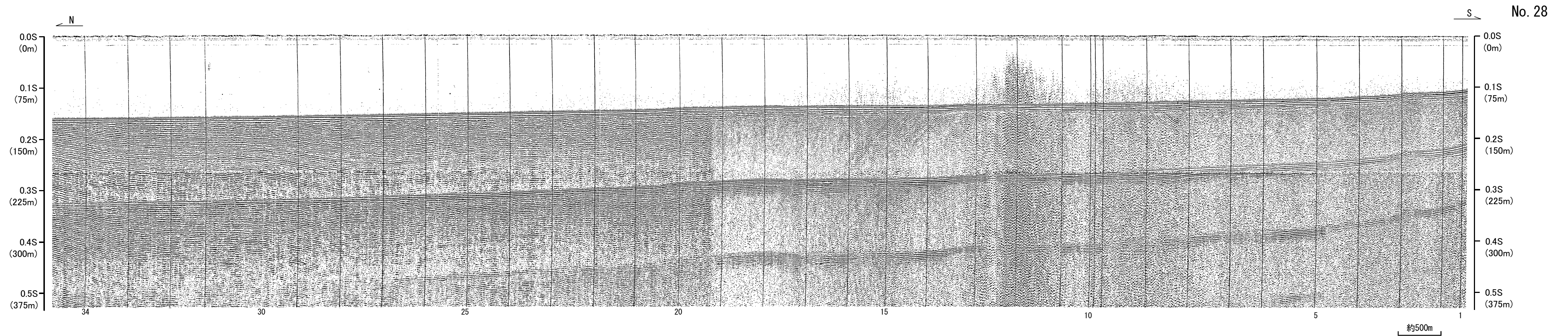
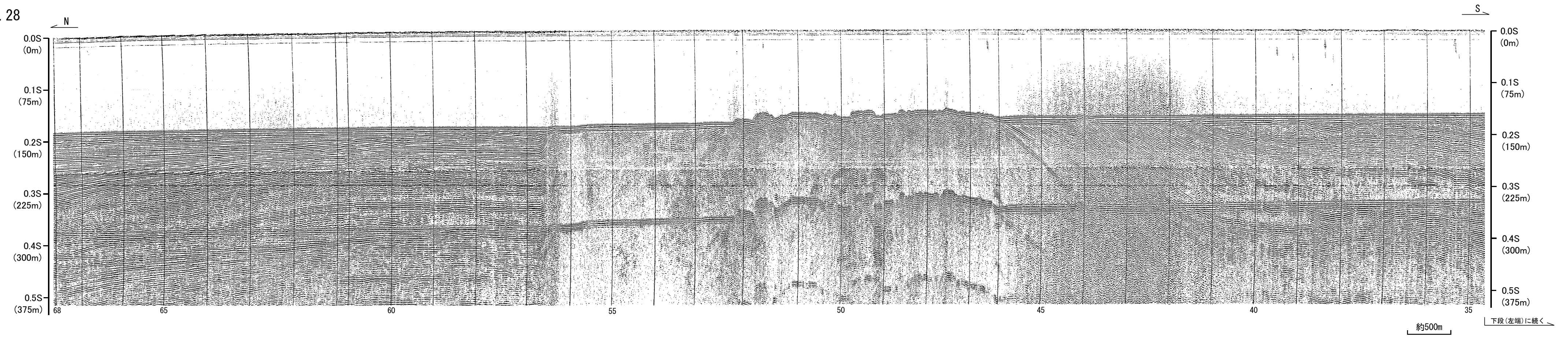
No. 24WG



No. 24WG

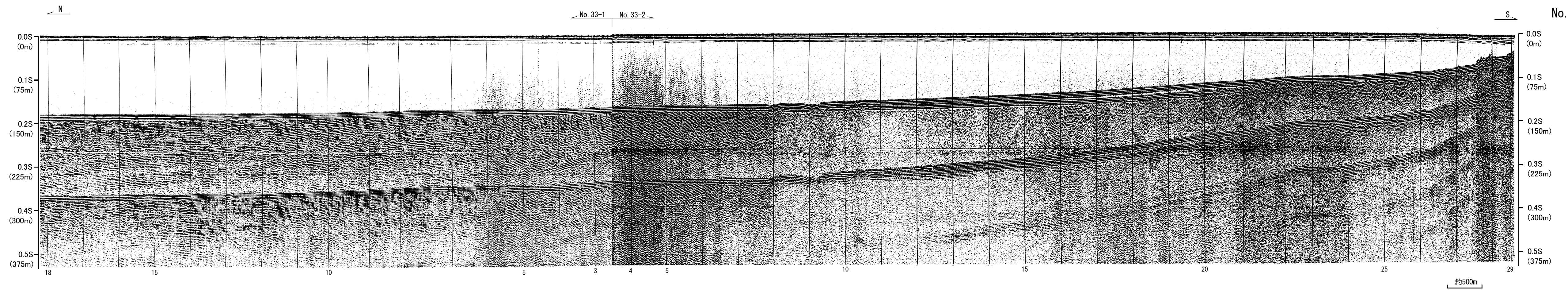
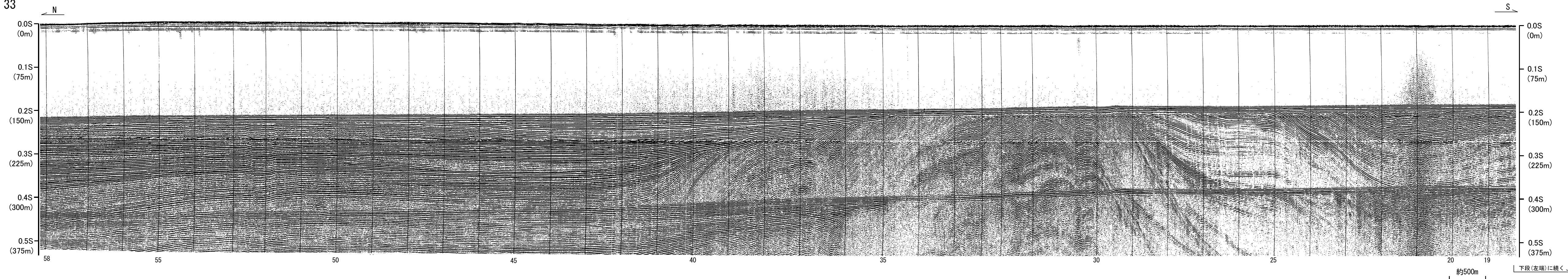
第3.2-32図(14) 敷地前面海域の音波探査記録 (No. 24BM, No. 24WG)

No. 28



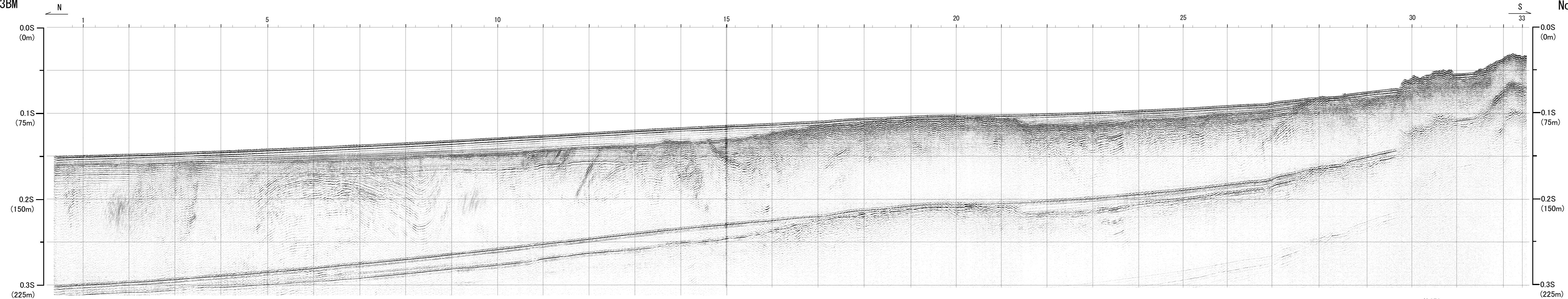
第3.2-32図(15) 敷地前面海域の音波探査記録 (No. 28)

No. 33



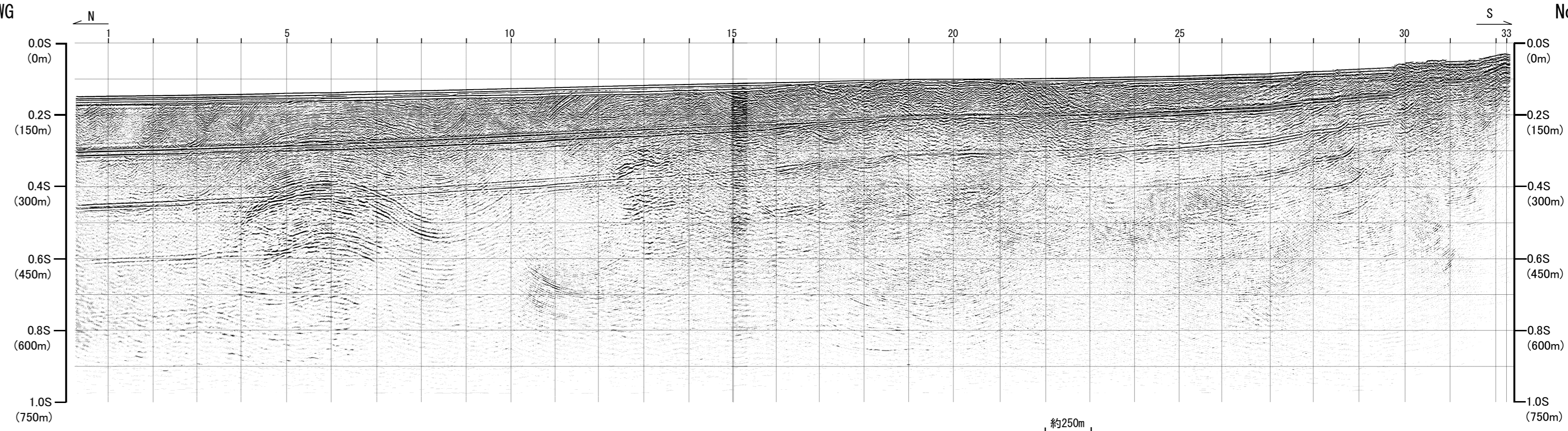
第3.2-32図(16) 敷地前面海域の音波探査記録 (No. 33)

No. 33BM



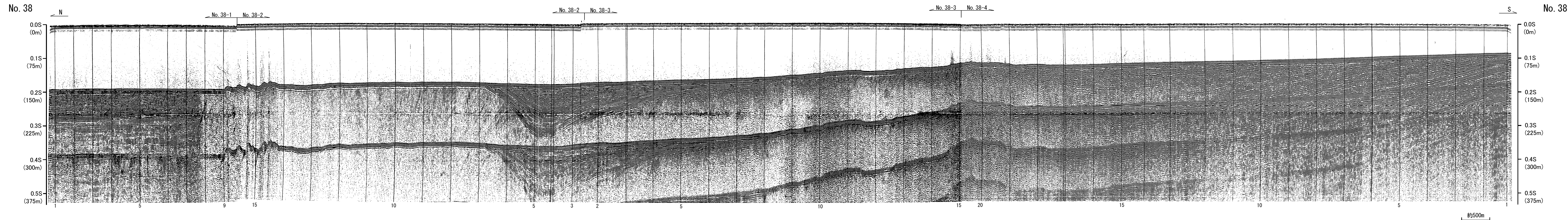
No. 33BM

No. 33WG



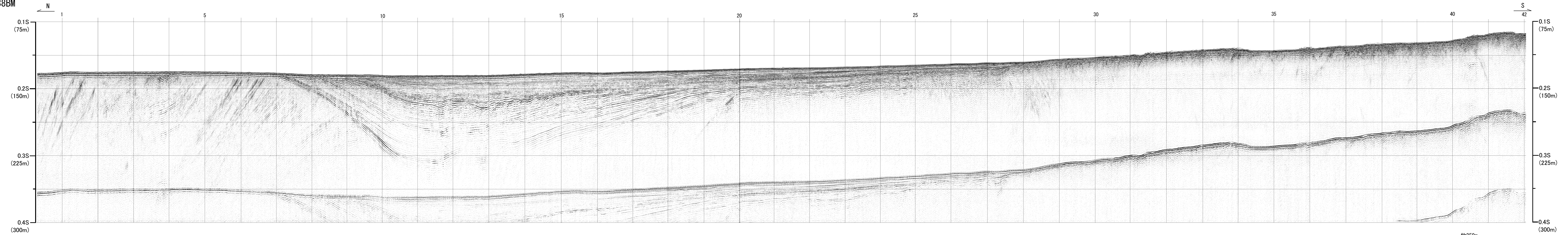
No. 33WG

第3.2-32図(17) 敷地前面海域の音波探査記録 (No. 33BM, No. 33WG)

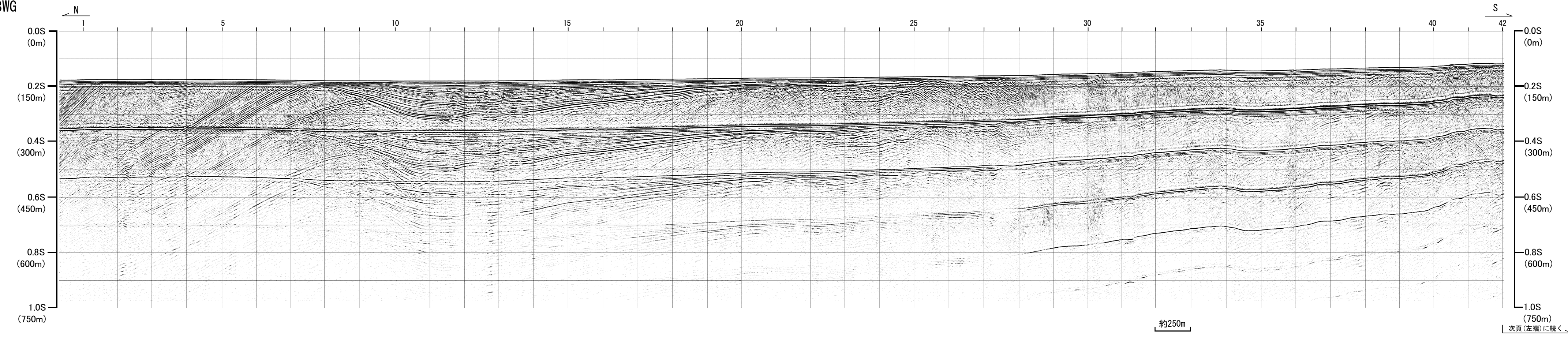


第3.2-32図(18) 敷地前面海域の音波探査記録 (No. 38)

No. 38BM



No. 38WG



第3.2-32図(19) 敷地前面海域の音波探査記録 (No. 38BM, No. 38WG・その1)