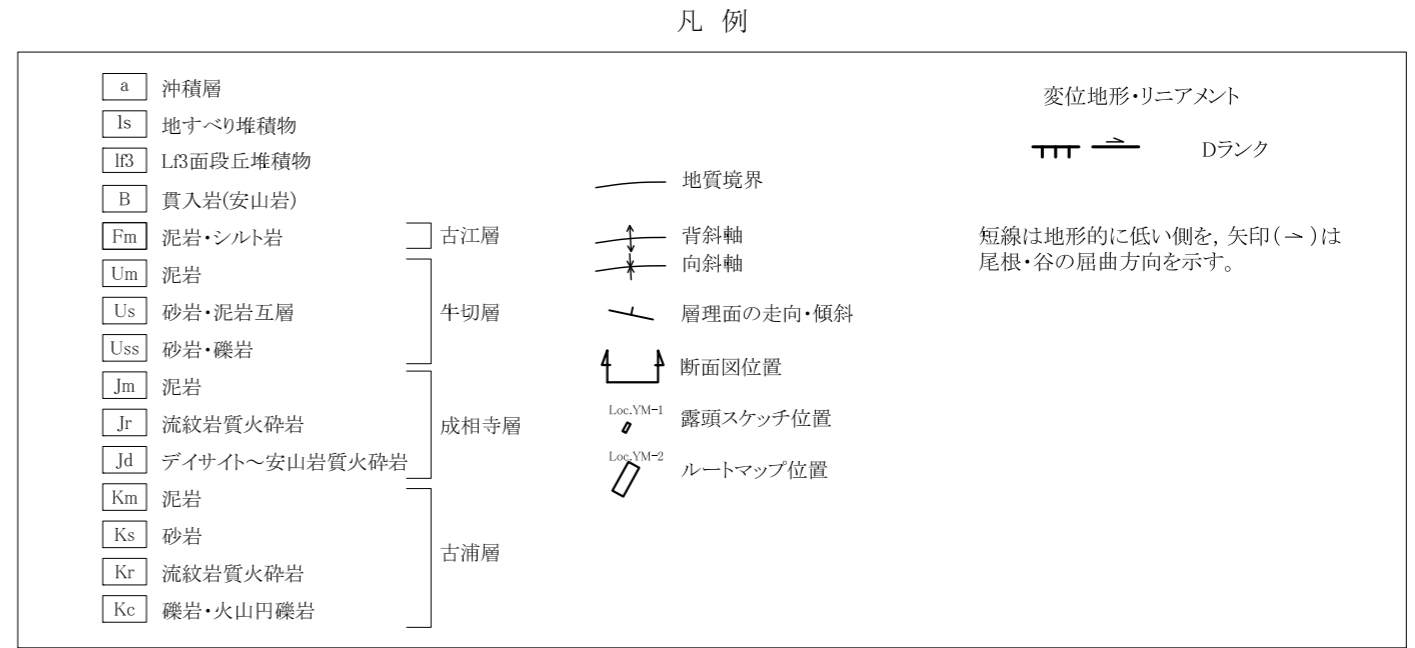
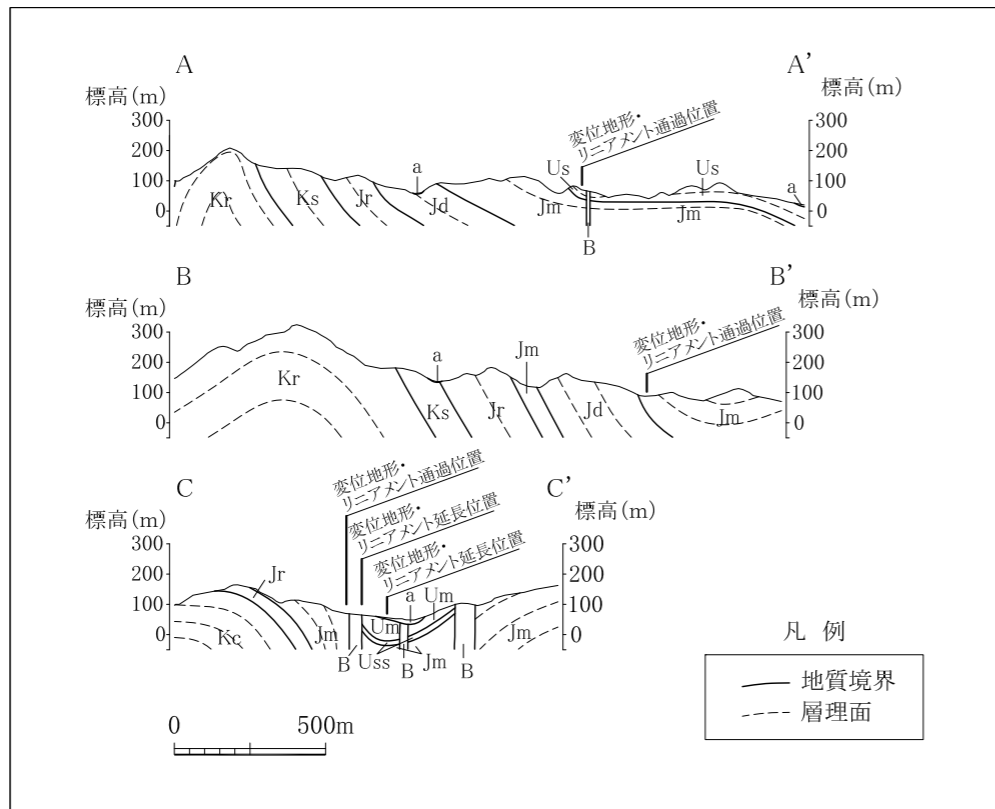
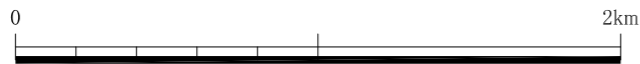
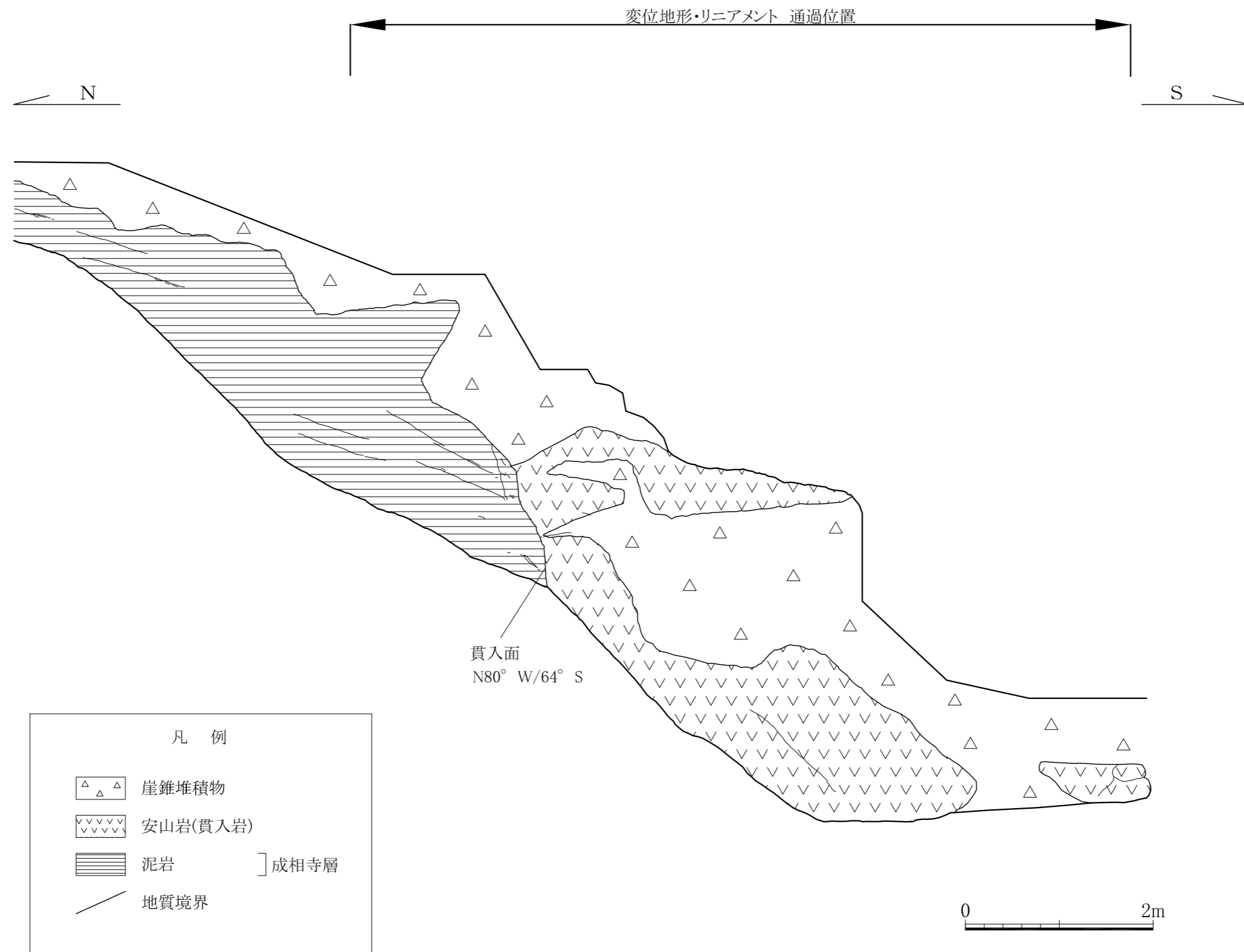


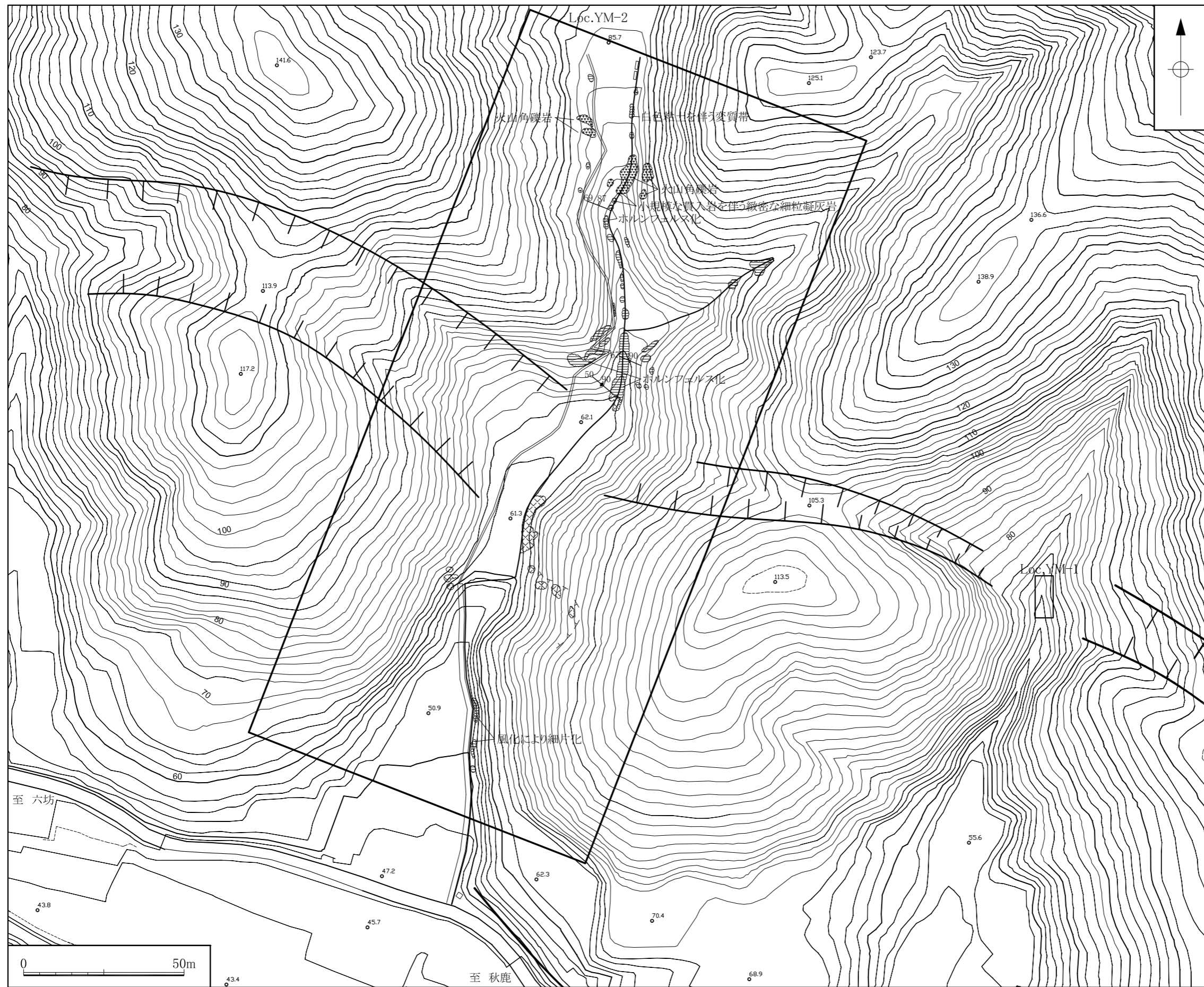
「測量法に基づく国土地理院長承認(複製)R 2CGf 8」  
 「本製品を複製する場合には、国土地理院の長の承認を得なければならない。」







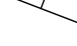

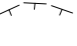


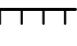
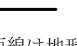
第3.3-110図 山中付近断層周辺の地質図及び地質断面図



第3.3-111図 露頭スケッチ(秋鹿町山中: Loc. YM-1)



凡例

-  安山岩(貫入岩)
-  凝灰岩類
-  泥岩
-  露頭位置
-  層理面の走向・傾斜
-  貫入面の走向・傾斜
-  滑落崖
-  沢筋
-  Loc.YM-1  
露頭スケッチ位置
- 変位地形・リニアメント
-   Dランク  
短線は地形的に低い側を示す。

第3.3-112図 ルートマップ(秋鹿町山中: Loc. YM-2)